

## Lithium Iron Phosphate (LiFePO4) Battery Specification

**SLAUMXLI22-12S(12.8V22AH)**



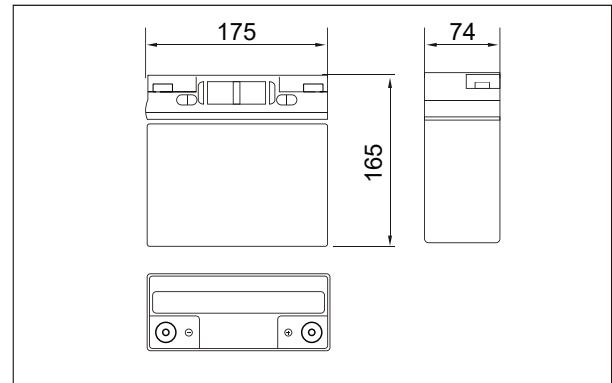
### Specifications

Nominal Voltage	12.8V	
Rated capacity (20 hour rate)	22Ah	
Dimensions	Total Height	165mm
	Height	165 mm
	Length	175 mm
	Width	74 mm
Weight Approx	2.90 Kg (6.40 lbs)	
Terminal	F8	

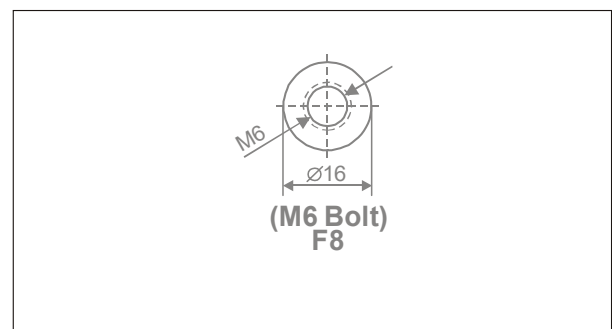
### Characteristics

Capacity Retention	>80% at 28 days	
Cycle Life	>80% at 1500 Cycles	
1.5 hour discharge to 10.5V	8.80 A	
Internal Resistance	<40 mΩ	
Charge	Charge Voltage	14.4±0.1V
Charecteristics	Charger Current	<25A
Discharge Charecteristics	Continuous Current	25A
	Maximum Pulse Current	30A(<5m)
	Discharge Cut-off Voltage	10V
Tempreture	Charge Tempreture	0°C-45°C(32°F-113°F)
	Discharge Tempreture	-20°C-60°C(-4°F-140°F)
	Storage Tempreture	0°C-40°C(32°F-104°F)

### Outer dimensions (mm)



### Terminal Type (mm)



### Discharge Curves 25°C(77 °F)

